

# Cycling Course

## Ocean or River



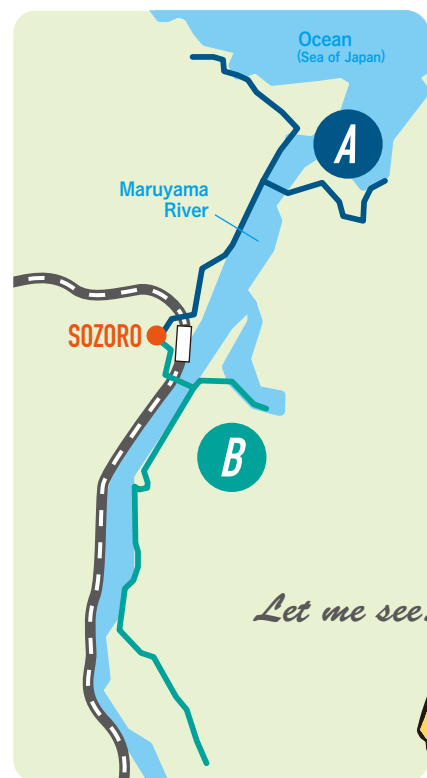
MAP



Bicycle Rental Service

### Around KINOSAKI ONSEN

Two courses: one to see the magnificent Sea of Japan, and one to see the naturally-formed Genbudo Caves



**A**  
Let's go to the Ocean!  
3-Hour Course

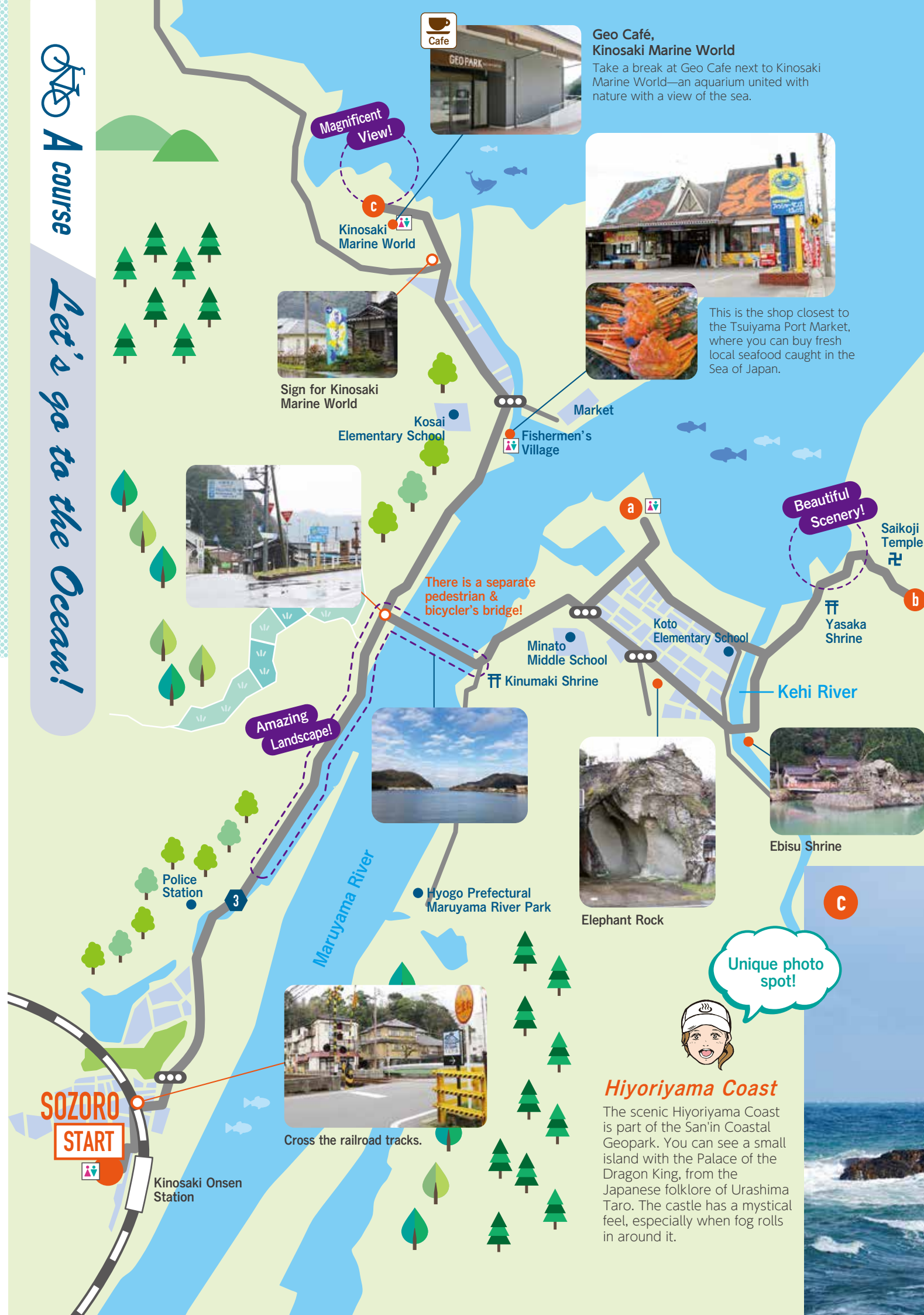
**B**  
Let's go to the River!  
2-Hour Course

Let me see...



A course

Let's go to the Ocean!



Magnificent View!



Geo Café,  
Kinosaki Marine World

Take a break at Geo Café next to Kinosaki Marine World—an aquarium united with nature with a view of the sea.



This is the shop closest to the Tsuyama Port Market, where you can buy fresh local seafood caught in the Sea of Japan.



Sign for Kinosaki Marine World

Kosai Elementary School

Market

Fishermen's Village



There is a separate pedestrian & bicyclist's bridge!

**a**

Beautiful Scenery!

Saikoji Temple

**b**

Yasaka Shrine

Koto Elementary School

Minato Middle School

Kinumaki Shrine

Kehi River

Amazing Landscape!



Elephant Rock



Ebisu Shrine

**c**

Unique photo spot!



Hiyoriyama Coast

The scenic Hiyoriyama Coast is part of the San'in Coastal Geopark. You can see a small island with the Palace of the Dragon King, from the Japanese folklore of Urashima Taro. The castle has a mystical feel, especially when fog rolls in around it.



Cross the railroad tracks.

SOZORO START

Kinosaki Onsen Station



**a**

A popular BBQ spot in the summer!



Kehi Beach

Kehi Beach is the closest swimming beach and camp site to Kinosaki Onsen. It is quieter and less crowded than Takeno Beach. Kehi Beach is one of the few beaches in the area that lets you camp and BBQ along the shore.



**b**

Tai Village & Wetlands

Tai Village is a small fishing village located at the mouth of the Maruyama River, facing the Sea of Japan. The Tai Wetlands behind it form a picturesque, open space that house endangered species of plants and insects by means of abundant spring water.



**c**



SOZORO START

Kinosaki Onsen Station

Cross the Kinosaki Bridge

Sasaura Bay

Maruyama River

Amazing Landscape!

Sign for Toshima Wetlands

Toshima Wetlands

Beautiful Scenery!

Cafe

Genbudo Museum

In the Genbudo Museum, you can see exhibits on minerals and fossils, as well as the science behind the Genbudo Caves.

Genbudo Park

Genbudo Park consists of 5 caves made of columnar joints that formed over 1.6 million years ago after the magma from a volcanic eruption cooled, contracted, and formed vertical cracks. These curvaceous columns have a distinctive polygonal shape and a honeycomb pattern.

Art created by nature!

a

Unique photo spot!



Sasaura Bay & Benzaiten

In Sasaura Bay, there is a torii gate and a small island. Benzaiten is a Buddhist goddess enshrined on the island. This island does not become submerged when it floods, but rather seems to float on the water. The torii gate makes for a beautiful landscape, especially when there is fall foliage in the mountain behind it.

b



You can pray for one wish to come true as well!!

Hanakake Jizou

An old legend says that a poor fisherman caught and deified Hanakake Jizou, when rice then proceeded to fall from its nose. He greedily tried to widen the Jizou's nose for more, but knocked it off, thus never producing rice again.

c



Toshima Wetlands

The Toshima Wetlands consist of rice paddy fields converted into wetlands. Many storks can be seen in spring when they lay their eggs. Try spotting a wild Oriental White Stork from a telescope in the administrative building!

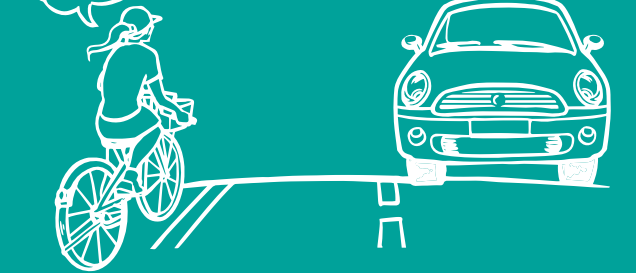
d



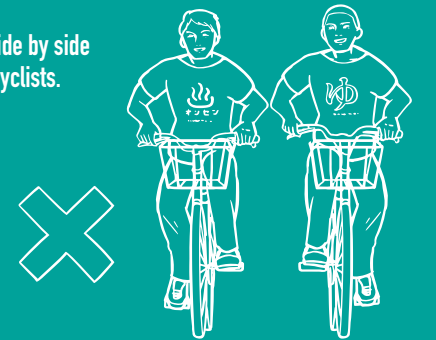
NOTICE

1. In Japan we drive on the left side of the road, so please keep to the far left.

Left



2. Do not ride side by side with others cyclists.



3. Please stop at traffic lights and red stop signs.



4. In Japan, it is illegal to ride a bicycle if you are drinking alcohol. We may deny a rental if the customer is known to have been drinking.



Kinosaki Onsen Tourist Information  
SOZORO

96 Yushima, Kinosaki-cho, Toyooka-shi  
Hyogo Prefecture 669-6101

TEL 0796-32-0013 (Local)  
+81-796-32-0013 (International)  
Business Hours 8:45am - 6:00pm

